

Operating Schedule

APRIL

Sundays 1-4:30 pm

MAY

Sundays 12:30-5:30pm

Memorial Day 1-5pm

JUNE JULY

Saturdays 1-5pm

Sundays 12:30-5:30pm

AUGUST

Saturdays 1-5pm

Sundays 12:30-5:30pm

Daily 12-3 pm

SEPTEMBER

Saturdays 1-5pm

Sundays 12:30-5:30pm

Labor Day 1-5pm

OCTOBER

Sundays 12:30-5:30pm

NOVEMBER

Sundays 1-5pm

Weather Permitting

Charter Operation

Available to groups and individuals

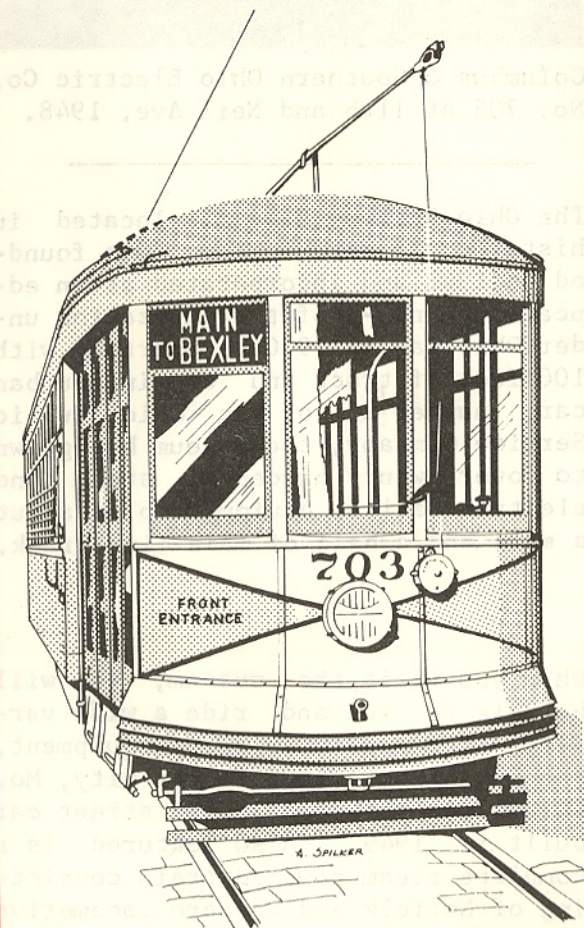
Information sent upon request, or

inquire at Museum



OHIO RAILWAY MUSEUM
990 Proprietors Road
Worthington, Ohio
P O Box 171
43085

Ohio Railway Museum





Columbus & Southern Ohio Electric Co. No. 703 at 11th and Neil Ave, 1948.

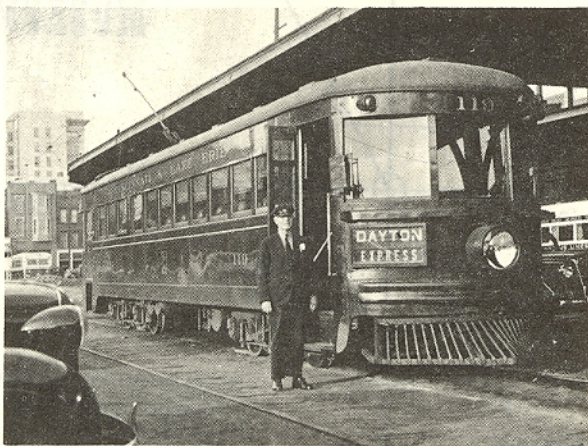
The Ohio Railway Museum, located in historic old Worthington, was founded in 1948 and incorporated as an educational non-profit organization under Ohio law in 1950. Starting with 100 feet of track and one interurban car, number 21 of the Ohio Public Service Company, the museum has grown to over twenty pieces of steam and electric railway equipment plus about a mile and a half of main line track.

When you visit the museum, you will be able to see and ride a wide variety of historic railway equipment, ranging from a 1900 Kansas City, Mo. street car to a modern PCC street car built in 1949. Also featured is a complete steam powered train consisting of Norfolk and Western locomotive No. 578, a railway post office car, Pullman cars and topped off with an

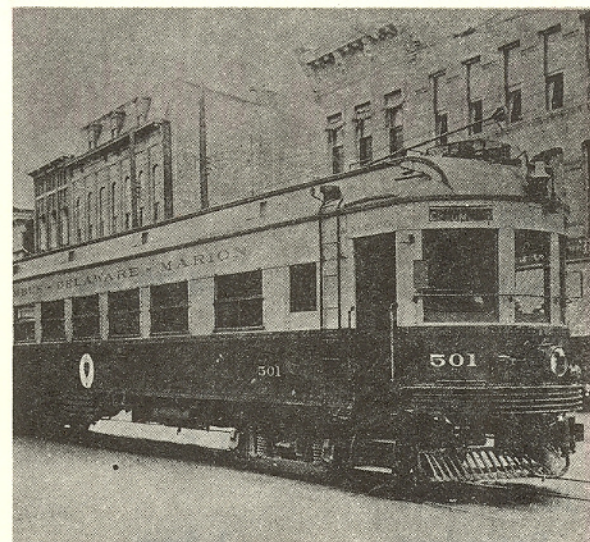
open platformed official's car. The museum is fortunate in having a representative collection of electric railway equipment from the state of Ohio; cars which once operated in or through Columbus, Dayton, Toledo, Springfield, Cincinnati, Mansfield or Lima.

The collection is not confined to rolling stock alone; besides an operating signal system, the Ohio Railway Museum has a full sized reproduction of a typical small town depot of bygone years. Erected as a result of donations of labor and funds by members and friends, this station building houses not only the offices of the museum, but also the gift shop and provides a place to store and display our collection of railroad photos and historic materials.

The restoration of these cars has often involved years of diligent labor on the part of a hard core of dedicated museum workers. Thousands



Cincinnati & Lake Erie No. 119 at the Columbus interurban station, 1938.



Columbus, Delaware & Marion No. 501 in downtown Delaware, 1933.

of hours of labor are donated each year by the members. In spite of the organization's limited shop facilities, mechanical, electrical and structural parts are rebuilt or reproduced in an effort to return a car to its original appearance and function.

Support for the museum comes from the dues, donations and labor of its members and from the donations of the public. The modest fare donations for riding the cars are a main source of income. The museum receives no money from any public or governmental agency.

Membership in the Ohio Railway Museum is open to anyone sixteen years of age or older. There are several categories of membership available and more information can be obtained by writing the museum.